

## Staff and Student Prayer/Contemplation Facilities



The University has an inclusive multi-belief Chaplaincy providing services to staff, students and visitors, such as prayer and contemplation rooms and garden; faith specific kitchen and washing facilities; as well as being able to meet the Chaplain in confidence.

People are welcome to attend each other's worship, e.g. Muslim Prayers, Jewish Shabbat, Christian Services, Pagan festivals, and also attend each other's societies.

*External view of the building:*



*(situated opposite the Students' Union building)*

**The Chaplaincy Centre  
Mansfield Building  
University of St Andrews  
3 St Mary's Place  
St Andrews  
Fife  
KY16 9UY**

Open from 6am to 10pm daily including weekends with swipe access

Tel: 01334 46 2866

Email: [chaplaincy@st-andrews.ac.uk](mailto:chaplaincy@st-andrews.ac.uk)

Web: [www.st-andrews.ac.uk/chaplaincy](http://www.st-andrews.ac.uk/chaplaincy)

*Mansfield Garden for contemplation or events:*



*Large room available for prayer:*

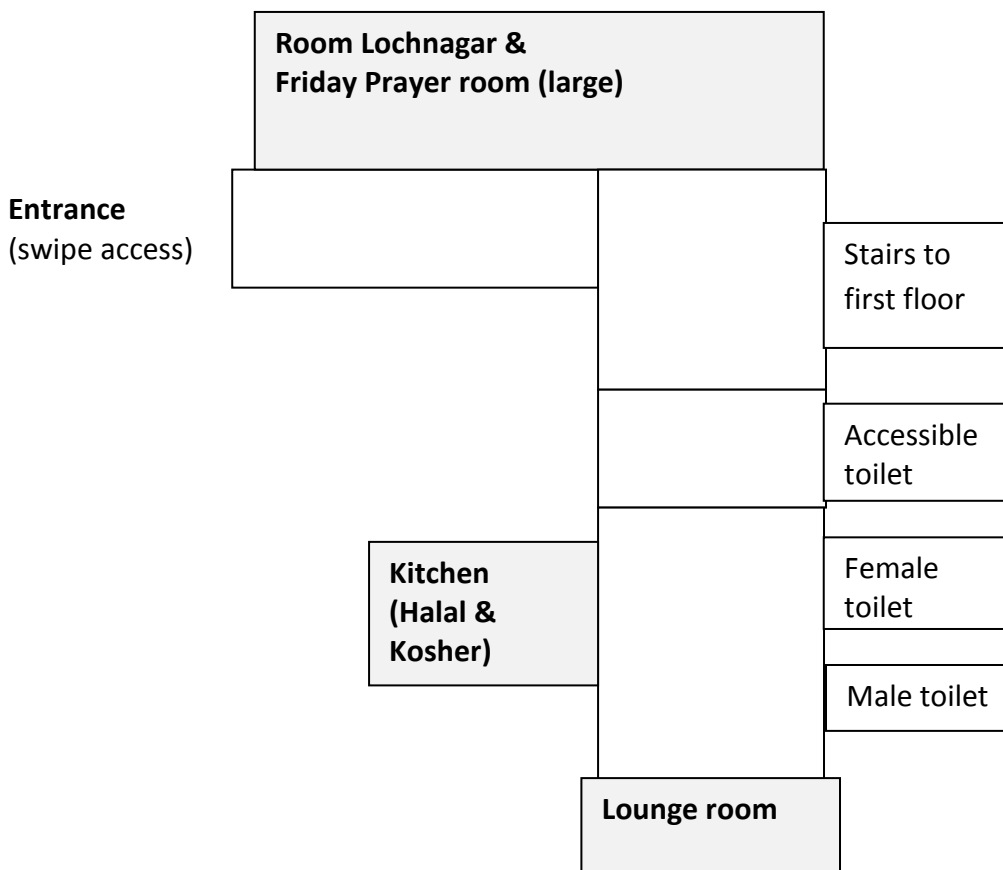


**St Salvator's Chapel:** The University Chaplain leads Morning Prayers from 8.45am to 8.55am every Tue to Fri morning during term-time. The Chapel is open from 8.30am to 5pm for prayer and contemplation, Mon to Fri (unless a service is taking place).



**Online Physical Access Guide for the Chaplaincy/Mansfield building on the 'DisabledGo':**  
[www.disabledgo.com/en/access-guide/chaplaincy-5/university-of-st-andrews](http://www.disabledgo.com/en/access-guide/chaplaincy-5/university-of-st-andrews)

## Ground floor plan - facilities for multi-belief groups:



---

## First floor plan - facilities for multi-belief groups:

